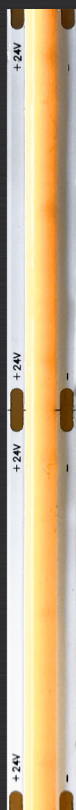


FLEX COB - PLUS 1400-4000

Led Strip



Alimentazione / Operating Voltage	24 V
Potenza / Power	14 W/mt
Larghezza Pcb / Width Pcb	8 mm
Altezza / Height Stripe	2 mm
Lunghezza / Length Stripe	5000 mm
Taglio segmento/ Length per Cut	45,5 mm
N° LED	144 / mt: COB
IP	20
Temperatura esercizio Storage Temperature	- 30° C - + 70°C
Lifetime	L70B20 50000H

	Flusso Luminoso Luminous Flux	Efficienza Efficiency	Colore Luce Led Color
DA-COB-1400-4000	1486 lm/mt	135 lm/W	4000 K



Via Cadorna, 40/42
20032 Cormano (MI)
Tel. +39 02 84269630
Fax +39 02 84269631
info@dadalighting.com
www.dadalighting.com

FLEX COB - PLUS 1400-4000

Led Strip

Light efficiency:

106 Lumen/Watt

Light quality:

CRI: 95,0

Color temperature:

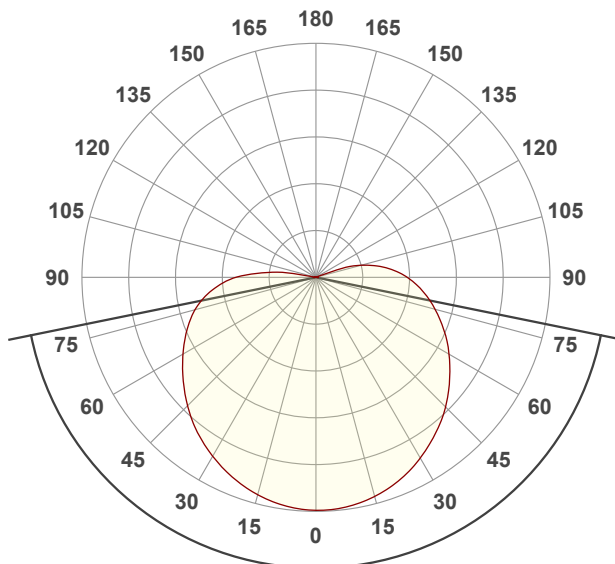
4001 K

Output: 1486 lm

Peak: 319 cd

Power: 14,0 W

24,0V @ 0,583A



Beam angle

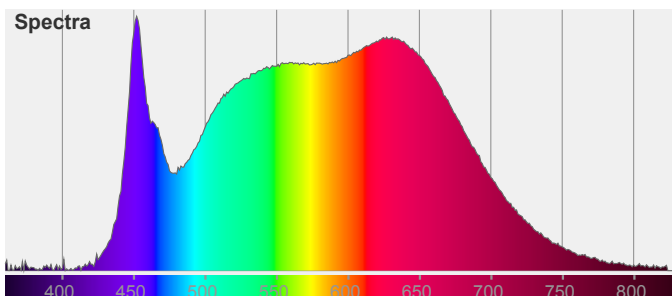
157°

Color



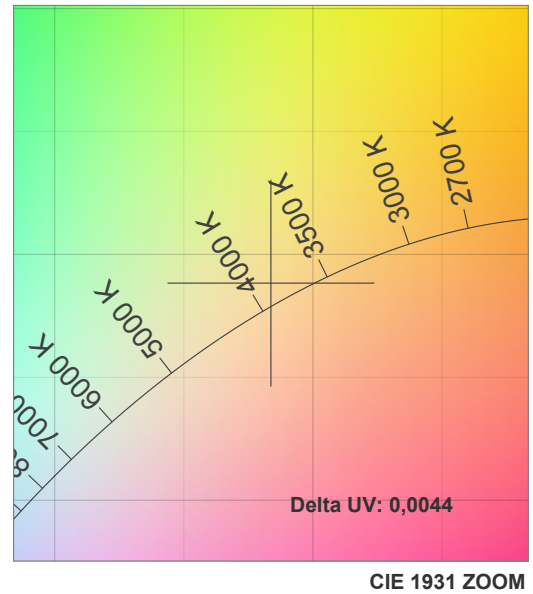
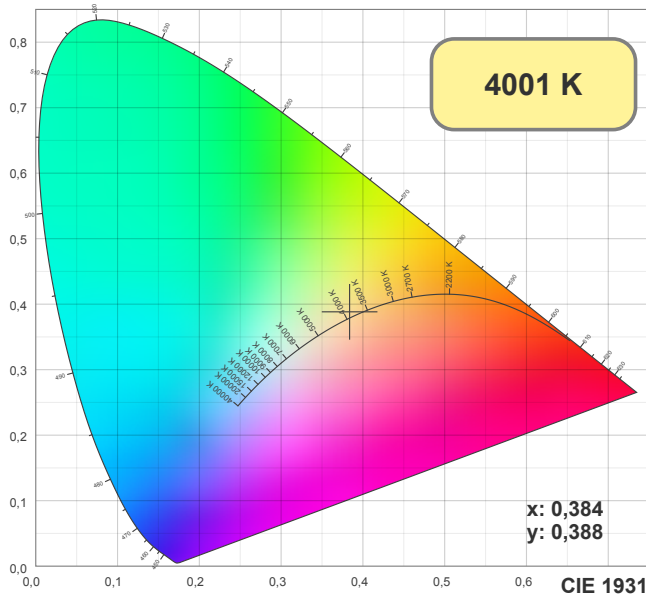
CIE1931
x: 0,384
y: 0,388

Spectra

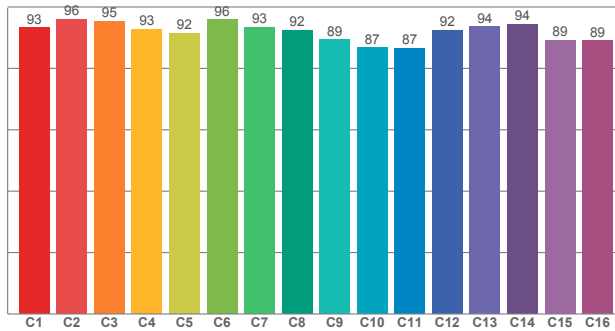


FLEX COB - PLUS 1400-4000

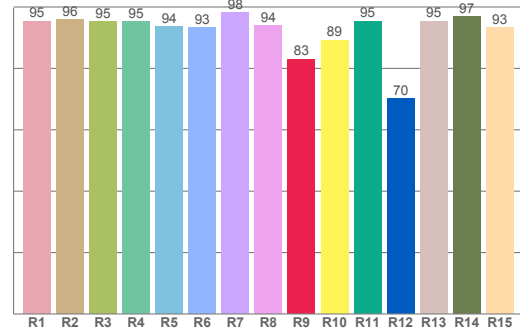
Led Strip



TM30: 91,8



CRI: 95,0 (R1-R8)



CRI R values, only R1-R8 are used to calculate final CRI value

R1	R2	R3	R4	R5	R6	R7	R8	R9	R10	R11	R12	R13	R14	R15
95,39	95,80	95,13	95,26	93,55	93,22	98,20	93,86	82,94	89,19	95,35	70,19	95,33	96,88	93,20

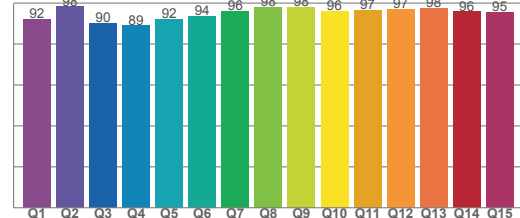
TM30 C values, 16 binned values out of total of 99 C values

C1	C2	C3	C4	C5	C6	C7	C8	C9	C10	C11	C12	C13	C14	C15	C16
93,32	96,09	95,35	92,75	91,51	95,81	93,42	92,43	89,30	86,72	86,55	92,40	93,53	94,38	89,15	89,01

CQS Q values

Q1	Q2	Q3	Q4	Q5	Q6	Q7	Q8	Q9	Q10	Q11	Q12	Q13	Q14	Q15
92,32	98,22	90,28	89,03	92,15	93,53	96,20	98,02	98,02	96,00	96,70	97,08	97,66	95,83	95,41

CQS: 94,3

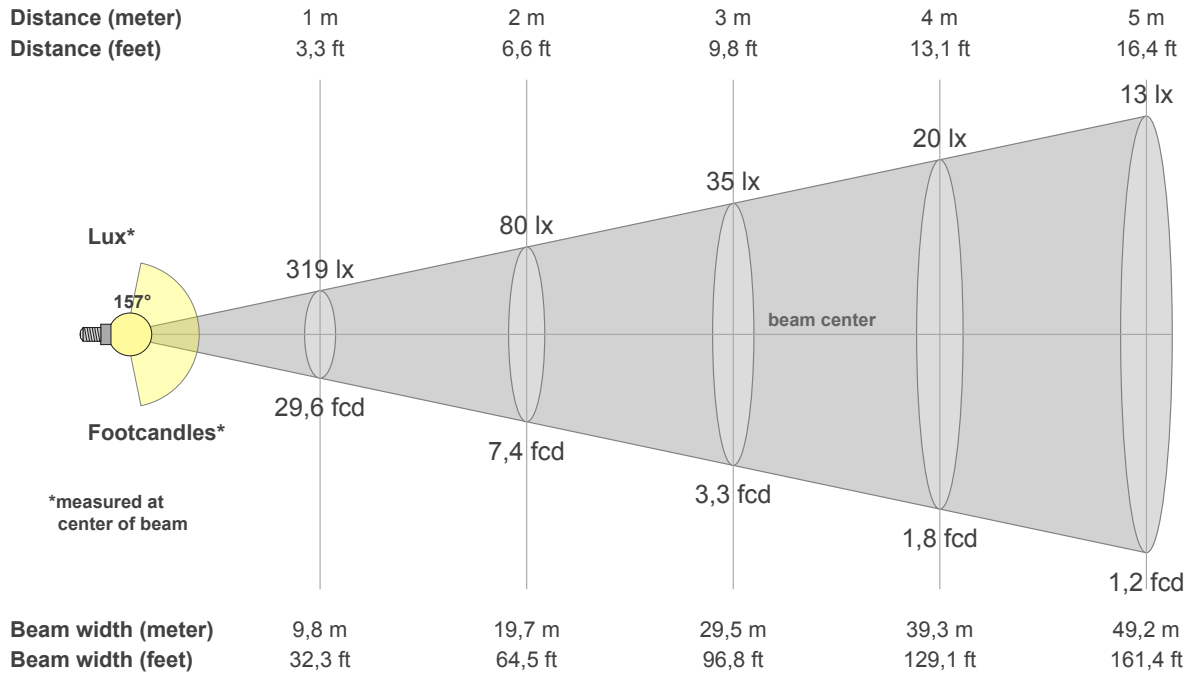


Color parameters

CCT	CRI	CRI R9	TM30 Rf	TM30 Rg	CQS	x	y	u	v	Duv
4001 K	95,0	82,9	91,8	98,0	94,3	0,4	0,4	0,2	0,3	0,0044

FLEX COB - PLUS 1400-4000

Led Strip



Intensities in 0° c-plane

0°	9°	18°	27°	36°	45°	54°	63°	72°	81°	90°	99°	108°	117°	126°	135°	144°	153°	162°	171°
319	316	307	292	272	251	227	203	177	152	125	91	48	2	1	1	1	1	1	1
100%	99%	96%	92%	86%	79%	71%	64%	56%	48%	39%	29%	15%	1%	0%	0%	0%	0%	0%	0%

Intensities in 0° c-plane

0°	9°	18°	27°	36°	45°	54°	63°	72°	81°	90°	99°	108°	117°	126°	135°	144°	153°	162°	171°
319	316	307	292	272	251	227	203	177	152	125	91	48	2	1	1	1	1	1	1
100%	99%	96%	92%	86%	79%	71%	64%	56%	48%	39%	29%	15%	1%	0%	0%	0%	0%	0%	0%

Intensities in 180° c-plane

0°	9°	18°	27°	36°	45°	54°	63°	72°	81°	90°	99°	108°	117°	126°	135°	144°	153°	162°	171°
319	314	304	289	270	249	225	203	179	150	109	43	1	1	1	1	1	1	1	1
100%	99%	95%	91%	85%	78%	71%	64%	56%	47%	34%	14%	0%	0%	0%	0%	0%	0%	0%	0%

Intensities in 180° c-plane

0°	9°	18°	27°	36°	45°	54°	63°	72°	81°	90°	99°	108°	117°	126°	135°	144°	153°	162°	171°
319	314	304	289	270	249	225	203	179	150	109	43	1	1	1	1	1	1	1	1
100%	99%	95%	91%	85%	78%	71%	64%	56%	47%	34%	14%	0%	0%	0%	0%	0%	0%	0%	0%

Beam angle 50%	Field angle 10%	Cutoff angle 2,5%	Intensity ratio in 120° cone	Intensity ratio in 90° cone
157,0°	211,1°	218,3°	55,1%	35,0%